

# Sinfonia di caccia

## Vivace

2

9

16

21

27

34

59

66

73

115

115

*ff*

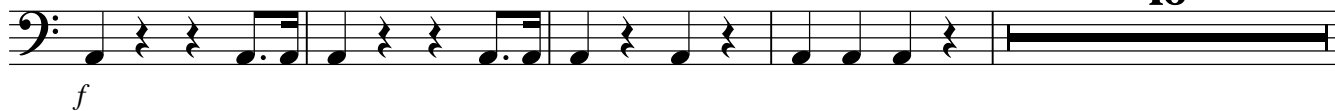
6

Pauken

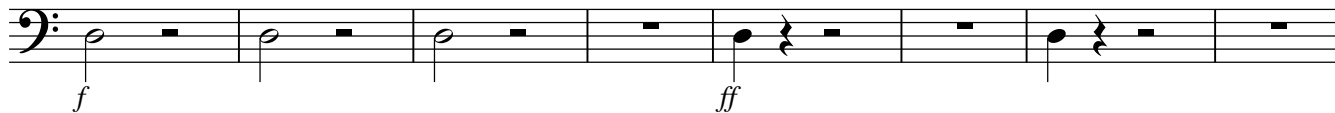
Pauken

126

16



146



154



160



164



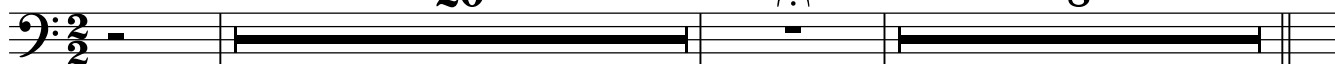
Adagio non tanto h = 36

tacet

II

20

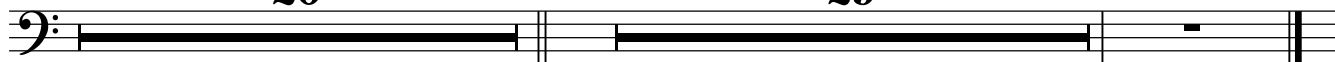
8



30

20

29



### Menuetto maestoso q = 112

### III

III

1.

8 2.

3

ff

f

18 1. 2. 24

p f p

Fine

25 7 32 15

D.C. al Fine

**Allegro non presto q. = 106**

## IV

8

16

35

59

69

97

*f*

*[ff]*

*p*

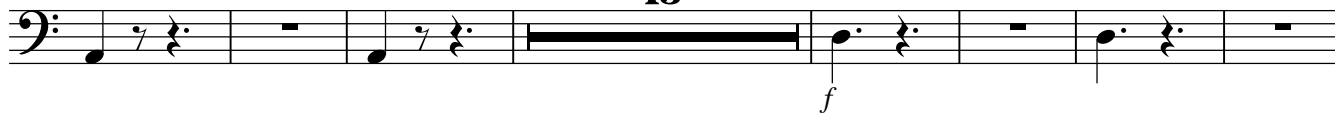
*ff*

## Pauken

105

*tr~ tr~*

114

**13**

134

**4***tr~*

145



153

**2**

161

**2**

170



175

